

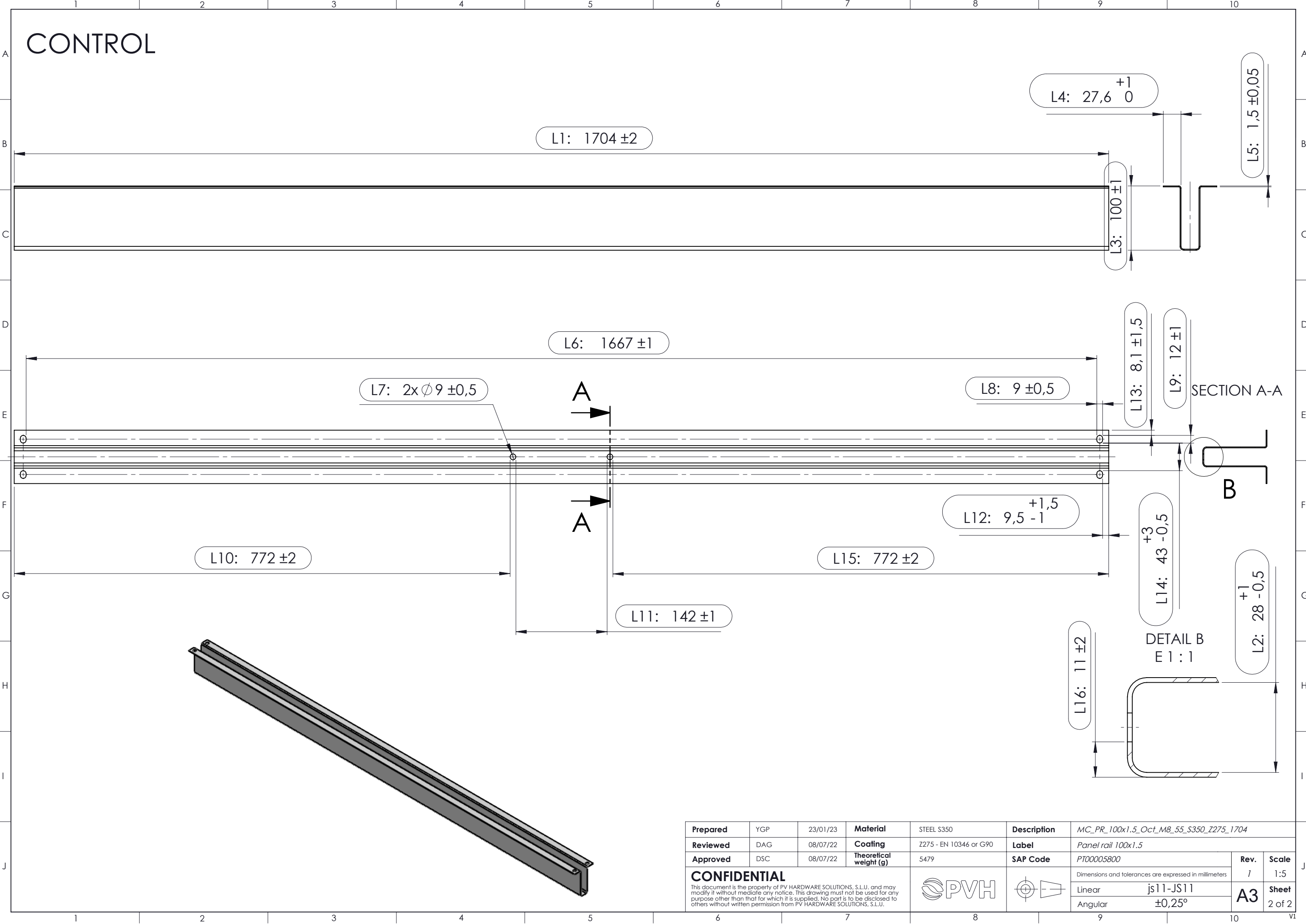




| | | | | | | | | | |
|--|-----|----------|------------------------|---|---|--|-----------|-------|-----------------|
| Prepared | YGP | 23/01/23 | Material | STEEL S350 | Description | MC_PR_100x1.5_Oct_M8_55_S350_Z275_1704 | | | |
| Reviewed | DAG | 08/07/22 | Coating | Z275 - EN 10346 or G90 | Label | Panel rail 100x1.5 | | | |
| Approved | DSC | 08/07/22 | Theoretical weight (g) | 5479 | SAP Code | PT00005800 | Rev. | Scale | |
| <div>CONFIDENTIAL</div> <div>This document is the property of PV HARDWARE SOLUTIONS, S.L.U. and may modify it without mediate any notice. This drawing must not be used for any purpose other than that for which it is supplied. No part is to be disclosed to others without written permission from PV HARDWARE SOLUTIONS, S.L.U.</div> | | | |  |  | Dimensions and tolerances are expressed in millimeters | | 1 | 1:5 |
| | | | | | | Linear | js11-JS11 | A3 | Sheet 1 of 2 |
| | | | | | | Angular | ±0,25° | | |



| | | | | | | | | | |
|--|-----|----------|------------------------|---|---|--|-----------|------|-----------------|
| Prepared | YGP | 23/01/23 | Material | STEEL S350 | Description | MC_PR_100x1.5_Oct_M8_55_S350_Z275_1704 | | | |
| Reviewed | DAG | 08/07/22 | Coating | Z275 - EN 10346 or G90 | Label | Panel rail 100x1.5 | | | |
| Approved | DSC | 08/07/22 | Theoretical weight (g) | 5479 | SAP Code | PT00005800 | | Rev. | Scale |
| <div>CONFIDENTIAL</div> <div>This document is the property of PV HARDWARE SOLUTIONS, S.L.U. and may modify it without mediate any notice. This drawing must not be used for any purpose other than that for which it is supplied. No part is to be disclosed to others without written permission from PV HARDWARE SOLUTIONS, S.L.U.</div> | | | |  |  | Dimensions and tolerances are expressed in millimeters | | 1 | 1:5 |
| | | | | | | Linear | js11-JS11 | A3 | Sheet 2 of 2 |
| | | | | | | Angular | ±0,25° | | |